

# Kawaliry

Muz. T. Sygietyński  
adapt. tekstu M. Zimińska-Sygietyńska

Piano introduction in 4/4 time, marked *f*. The music consists of a series of chords in the right hand and a steady bass line in the left hand. The right hand starts with a series of chords, followed by a melodic line with eighth notes. The left hand plays a simple bass line with quarter notes.

5

Vocal line and piano accompaniment for the first four lines of the song. The vocal line is in 4/4 time, marked *mf*. The piano accompaniment is in 4/4 time, marked *mf*. The vocal line has four lines of lyrics, and the piano accompaniment has four lines of music. The piano accompaniment features a steady bass line and chords in the right hand.

1. Po - có - ześ - ta ka - wa - li - ry przy - śli  
2. Mo - ja i - zba z cio - sa - ne - go drze - wa ło jo jo joj do  
3. Oj trze - ba mi ka - wa - li - ra pa - na  
4. Chy - ba że - bym cie - bie po - ko - cha - ła

9



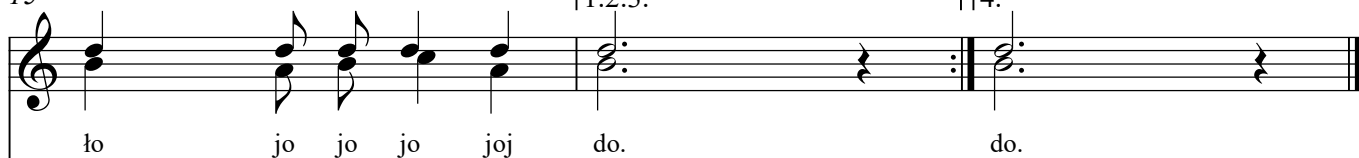
mo - ja i - zba nie - do wa - sej my - śli  
 nie ta - ki - go ka - wa - li - ra trze - ba to jo jo jo joj  
 nie ta - ki - go jak ja je - zdem sa - ma  
 to bym pie - chty i bo - so bie - ga - ła

12



do mo - ja i - zba nie - do wa - sej my - śli  
 nie ta - ki - go ka - wa - li - ra trze - ba  
 nie ta - ki - go jak ja je - zdem sa - ma  
 to bym pie - chty i bo - so bie - ga - ła

15



to jo jo jo joj do. do.